

SKOOKUMbrand

YUKON ANORAK

IVVAVIK - **VUNTUT** - KUSAWA



ORIGIN ASSURED



Functional O/A° Fur Ruff, Removable (options listed below)

Contoured & Adjustable Polartec® WindPro® Lined Hood

Polartec® Powershield® Neck Gaiter

Polartec® WindPro® Thermal Lining

2-Way Zippered Underarm Vents

YKK® Zippers Throughout

Side Arm Welt Pocket

3M® Reflective Tape (back only)

Polartec® WindPro® Hand Warming Pockets

iPod Pocket, Internal

Adjustable Drawstring Waist, Internal

Adjustable Cuffs

Polartec® Powerstretch® Wrist Gaiters

Model: Pullover - back

ArcticTech® Outer Shell Fabric, Super-Tough, Wind & Abrasion-Resistant, Teflon-Finished for Water Repellency (available colours listed below)

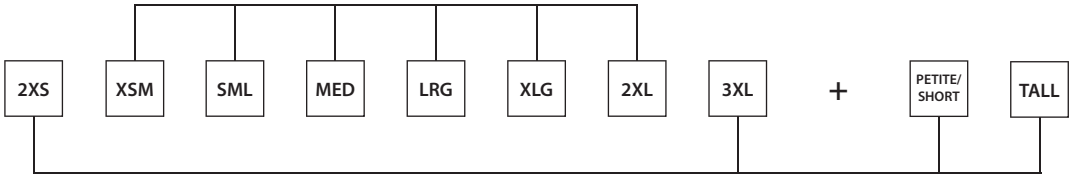
Cordura® Reinforcements (shoulders, hemline & piping)

Inuit-Inspired hemline (mid-thigh, front & back)

Model: Pullover - front

STANDARD

SIZES:



Muskox Brown

Rucksack

Tundra Moss

Spruce Tip

Lichen

Sundog

Bushfire Red

Low Bush Cranberry

Rosehip

Yukon Rose

Fireweed Pink

Arctic Orchid

Festival Purple

Icefield

Lupin Blue

Deep Lake Blue

Boreal Black

Grayling

Winter Camo



FUR OPTIONS:

- Coyote (*Canis latrans*)
- Wolf (*Canis lupus*)
- Arctic Fox (*Alopex lagopus*)
- Wolverine (*Gulo gulo*)

SKOOKUMbrand

YUKON ANORAK

IVVAVIK - **VUNTUT** - KUSAWA



ORIGIN ASSURED

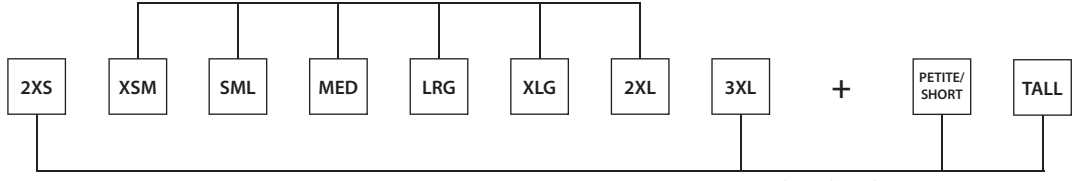


Model: Fullzip - front

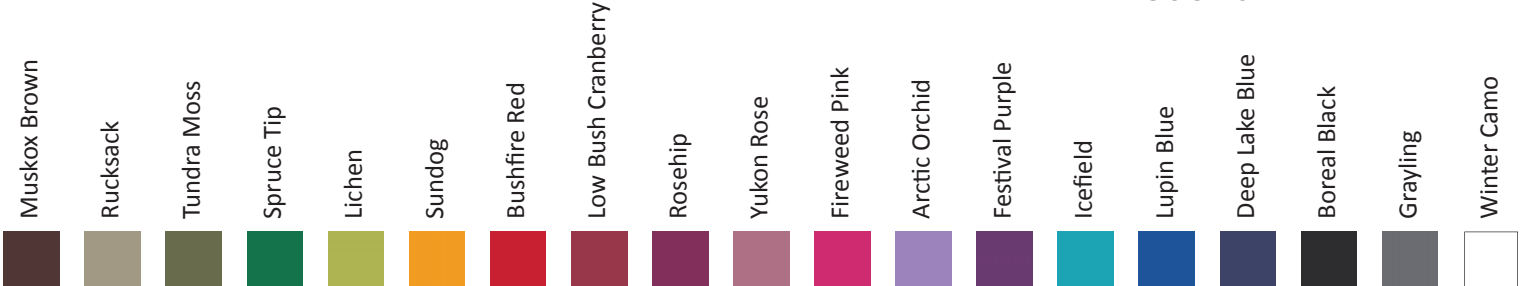
Model: Fullzip - back

STANDARD

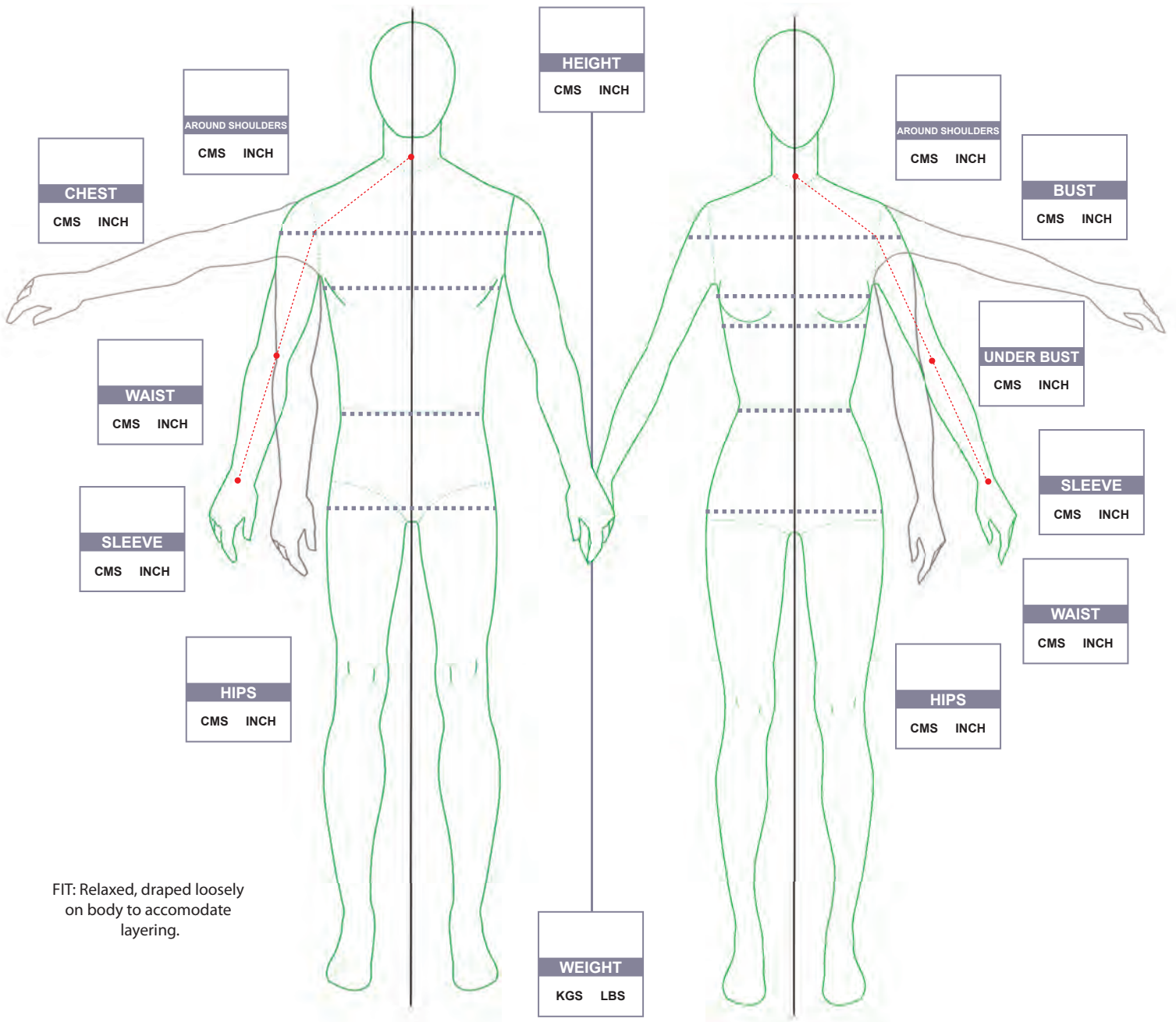
SIZES:



CUSTOM



FUR OPTIONS: Coyote (*Canis latrans*) Wolf (*Canis lupus*) Arctic Fox (*Alopex lagopus*) Wolverine (*Gulo gulo*)



FIT: Relaxed, draped loosely on body to accommodate layering.

UNISEX/MENS SIZING	2XS		XSM		SML		MED		LRG		XLG		2XL		3XL		Notes or Special Instructions:
	from	to	from	to	from	to	from	to	from	to	from	to	from	to	from	to	
CHEST	inch				38	40	41	43	44	46	47	49	50	52	53	55	
	cm				97	102	104	109	112	117	119	124	127	132	135	140	
SLEEVES	inch				34		35		36		37		38		39		
	cm				86		89		91		94		97		99		
Tall - add 5 cm (2") to arm length and overall length																	
Short - subtract 3.8 cm (1.5") from arm length and overall length																	
WOMENS SIZING	2XS		XSM		SML		MED		LRG		XLG		2XL		3XL		
	from	to	from	to	from	to	from	to	from	to	from	to	from	to	from	to	
BUST	inch	32	33	34	35	36	38	39	41	42	44	45	47				
	cm	81	84	86	89	91	97	99	104	107	112	114	119				
SLEEVES	inch	29		30		31		32		33		34					
	cm	74		76		79		81		84		86					
Tall - add 3.8 cm (1.5") to arm length and overall length																	
Petite - subtract 2.5 cm (1") from arm length and overall length																	
Chest/Bust: Under arms, around fullest part of chest.																	
* Sleeve: With elbow bent, measure from the center (back) of neck to elbow, then down to wrist.																	
** Around Shoulders: Around (circumference) of broadest part of shoulders.																	